



● ● ● April 2019

This Month Featuring: Mily Sultana

Mily works as a teacher in the Fox Hole (13 months – 18 months), Rabbit Hole (18 months – 2 ½ years) and Honey Tree Room (2 ½ years – 3 ½ years.) She is a wonderful teacher, takes good care of the children and keeps them safe, happy and healthy. Mily is dependable, responsible, works hard at all that she does and helps out wherever needed. She is always available to answer any questions regarding your child's day. Mily has been at the Center since August 22, 2011, and truly represents the quality staff at The Honey Tree that are meeting the needs of your children in a loving, warm and caring environment – “a home away from home where every child is cherished”.



April Happenings ● ● ●

Birthdays!



Children:

Camden Gould Alan Siller
Kash'lyn Shelby Diedra-Leah Williams

Staff: Mary Clements, Tareka Lockhart

Employee Highlights ● ● ●

Perfect Attendance for March

Heather Abrookin	Mili Choudhury	Afroza Khanam
Syeda Begum	Mary Clements	Shelley Rahman
Rizba Castillo	Melissa Harris	Mily Sultana
		Minnie Walker
		Syeda Yakub

Staff Anniversary

Vivienne Devora – 2 year
Bridget Williams – 5 years

Helen's Corner ● ● ●

1 This month the themes for the **Rabbit Hole, Honey Tree Room, Pooh's Forest** and **Pre-K** is **Bees & Butterflies**.

2 **Pancakes for Parents ...**
All parents are invited to come and eat breakfast with their children on **Thursday, April 25**.



3 If you have not paid the **Curriculum/Materials Fee** for your child, please do so as soon as possible.

4 **Medicine Charts** – When signing in medicine for your child, please be aware that there are two separate charts:

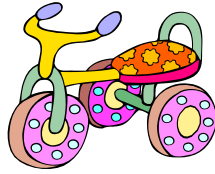
(1) **Infant Center** (purple sheets) – for the Pooh Room, Fox Hole and Rabbit Hole.

(2) **Preschool and Schoolers** (blue sheets) – for The Honey Tree Room, Pooh's Forest, Pre-K and Schoolers.



Please make sure that you write EACH medicine on a SEPARATE line and please DO NOT USE DITTO MARKS.

5 We will be participating in the St. Jude Children's Research Hospital Trike-A Thon Safety Program the week of April 8-12.



8 **Center Closed - April 19th** – The Center will be closed on Friday, April 19th in observance of Good Friday.

6 **Summer Enrollment** – We need to know if your children will be at the Center this Summer. There is a form next to the Sign In/Out Sheets. Please check YES or NO next to your child's name.



9 **Spring Party and Easter Egg Hunt**
The children in the Rabbit Hole, Honey Tree Room, Pooh's Forest and Pre-K will have a Spring Party and Easter Egg Hunt on Thursday morning, April 18. Any parent interested in helping with refreshments, please come to the office.



7 **Summer Program** – We are looking for parents interested in being part of our summer program. You will have the opportunity to share with the children about your job, read stories, do an art project, etc. Please let us know if you would like to participate.

Thanks!

To all our parents for your comments, suggestions and support. Please continue to let us know how you feel about the Center, the care your children receive or just come by and say hello. You are very important to us and we do care about what you say.



Find us on
facebook

Please "Like" our page!

[Facebook.com/thehoneytreepreschoolandchildcarecenter](https://www.facebook.com/thehoneytreepreschoolandchildcarecenter)

We would appreciate you suggesting our page to all your FB friends.

The Honey Tree
Preschool and Child Care Center



April 2019



1 	2 Music Class	3	4 Spanish Class	5
8	9 Music Class	10 	11 Spanish Class	12 Program Week - 8th-12th
15	16 Music Class	17	18 Spring Party & Easter Egg Hunt Morning 	19 Center Closed Good Friday
22	23 Music Class 	24	25 Pancakes for Parents Come join your child for breakfast  Spanish Class	26
29	30 Music Class			

Rabbit Hole • Honey Tree Room • Pooh's Forest • Pre-K

Theme: Bees & Butterflies | **Color/Shape:** White / Hexagon
Letters/Numbers: M, X & K / 15 & 16